

**Conservation, Energy, & Environment Committee (CEEC) Report
Public Health, Safety & Environment Subcommittee, October 1, 2024
Submitted by Paula Jones, Chair, CEEC**

September Activity:

1. There were two recent changes in the Town's recycling program. Battery drop-off in the Town Hall parking lot was discontinued due to the deposition of inappropriate materials in the bin. Additionally the "Take-back" medication site at the Police Station has been discontinued for similar reasons.

The Health District provided a flyer detailing different options for the safe disposal of medications, including the District's free provision of Detera bags to Bloomfield and West Harford residents. (See the attached article from the Bloomfield Messenger.) This flyer is posted on the Town website's Document Center (<https://www.bloomfieldct.gov/DocumentCenter/View/4239/How-to-Safely-Dispose-of-Medications?bidId=>) as well as on CEEC's "Recycling and Composting" page.

The comprehensive "Town Recycling and Safe Disposal 411" guide (attached) has been updated to reflect both changes. This guide is also available on the CEEC "Recycling and Composting" page.

Note: The Town of Bloomfield is participating in National Drug Take-Back Day on October 26th. (10 am to 2 pm, Human Services Center, 330 Park Ave, flagpole entrance).

2. Fall Shred and Small Electronics Recycling Day (November 2nd, 9 to noon, *change in location from Town Hall to Bloomfield High School*).

The location of this fall's event will be Bloomfield High School so as not to impede voter access to Town Hall for early voting on November 2nd. Information about the event (stressing the change in location) will be provided to residents through the Town's website, Weekly E-Newsletter "This Week in Bloomfield," and the Bloomfield Messenger.

3. The CEEC continues to send the Bloomfield Messenger "Green News" articles as opportunities arise to inform the public about environmental and energy issues. The Spotted Lanternfly, a destructive plant pest that threatens Connecticut's forests, residential areas, and agricultural businesses, is in Bloomfield. (If you see one, kill it!) The Messenger published the attached article about this pest on September 14, and included a reminder about protecting yourself from mosquito bites.

Upcoming CEEC Events:

October 23, 6:30 pm: CEEC is partnering with the Bloomfield Public Library and the Rich Earth Institute to present the virtual program "Peecycling for Climate Resilient Sanitation and Sustainable Agriculture." The program is posted on the Bloomfield Public Library's event calendar as well as on the Town Event Calendar (<https://bloomfieldct.gov/Calendar.aspx?EID=1777>).

October 23: Last day to enter the Trees for Bloomfield Photo Contest
<https://bloomfieldct.gov/830/Trees-For-Bloomfield-Photo-Contest>

November 2: Fall Shred and Small Electronics Recycling Day (9 to noon, Bloomfield High School)

The CEEC meets the second Thursday of each month from 4:30 – 6 PM via a hybrid meeting format (in person at Town Hall, Conference Room 5). Next scheduled meeting – November 14.



GREEN NEWS

Safely Dispose of Medications!

Starting September 17th, the WHBHD will provide **FREE** Deterra Bags for safe medication disposal to West Hartford and Bloomfield residents.

WHAT ARE THEY?

The **Deterra Drug Deactivation** and Disposal System is a simple, environmentally safe way to get rid of unused/unwanted/expired medications!

Why do we need safe medication disposal?

- Properly disposing of unneeded drugs helps prevent them from being misused or stolen.
- Keeping children, pets, and others safe from accidentally ingesting unused or expired drugs.
- Help keep unused medications out of our water and soil.



WHERE?

You can pick up a bag at **580 Cottage Grove Rd, Suite 100, Bloomfield, CT between 7:30 AM and 3 PM.** No appointment is needed! Proof of residency is required (ID, mail).

Some additional state and nationwide info that you may find useful:

DEEP: The CT Department of Energy & Environmental Protection has a great resource that offers alternative disposal methods. For more information, visit: <https://shorturl.at/zVgcz>.

Drug Take Back Program: A great opportunity for the community to safely dispose of expired, unwanted, or unused controlled substances and medication twice yearly. More info: www.dea.gov/takebackday.

QUESTIONS? Please call the WHBHD at 860-561-7900.

580 Cottage Grove Rd, Suite 100, Bloomfield, CT, 06002



West Hartford-Bloomfield Health District

PROTECT THE ENVIRONMENT FROM THE UNSAFE DISPOSAL OF MEDICATIONS



By Paula Jones

Chair, Conservation Energy & Environment Committee

The Bloomfield Police Department recently discontinued its lobby drop-off box for disposing medication. Inappropriate materials were being deposited causing safety concerns for personnel. In response, the West Hartford-Bloomfield Health District worked with the Town of

Bloomfield and is offering a new disposal option. Starting September 17th, the WHBHD will provide free Deterra Bags (at 580 Cottage Grove Road, Suite 100) to Bloomfield and West Hartford residents.

Additionally, the WHBHD created a flyer (shown here) listing the different options available for the safe disposal of medications. This flyer is also posted on the Town of Bloomfield's CEEC recycling page, and also on the DPW Trash/Recycling page under documents.

Please be a good neighbor and do your part to properly dispose of unneeded medications. Keep others safe, and help keep drugs out of our soil and water.



Town Recycling & Safe Disposal 411

CURBSIDE RECYCLING

The following can be recycled in your blue bin biweekly:

- **Paper** (newspaper, junk mail, magazines, catalogs, books with hardcovers removed, non-shredded paper, paper bags, egg cartons). NO GIFT WRAP OR GIFT BAGS.
- Clean **cardboard and boxboard**
- Empty **glass bottles and jars** (including lids)
- **Aluminum cans** (including lids) and clean **aluminum foil & foil containers**.
- **Empty cans** (including aerosols for food, e.g. PAM spray)
- **Plastics** labeled #1-7 (exceptions include prescription bottles, plastic bags, or styrofoam).

Questions about curbside recycling?

Contact All American Waste at (800) 826-7952 or visit aawllc.com.

LOCAL RECYCLING STATIONS

The following can be recycled in recycling bins **inside** Town Hall and Human Services (330 Park Ave):

- **Corks**
- **Dental care products** (toothbrushes, floss containers, empty toothpaste tubes)
- **Printer ink cartridges**
- Small **electronics** (cell phones, ipods, CDs, earbuds, cables, etc)

The following can be recycled in separate receptacles **in the parking lots** at Town Hall & Human Services:

- **Unusable clothing & fabric** (materials must be bagged)

All **redeemable cans & bottles** can be brought to CT Bottle & Can Redemption (77 Pierson Lane, Windsor) for deposit reimbursement.

WINDSOR TRANSFER STATION

The following can be brought to the Windsor Transfer Station (500 Huckleberry Road, Windsor) that also serves Bloomfield.

No charge items:

- Batteries
- Electronic Waste (monitors, computers, printers, etc)
- Leaves (seasonal)
- Mattresses
- Scrap Metal
- Waste Oil

Fee items:

- Air Conditioners & Dehumidifiers
- Fridges & Freezers
- Propane Tanks (20lb and smaller)
- Tires

For questions, hours, & fees visit townofwindsorct.com/public-works/transfer-station or call (860) 285-1833.

USABLE ITEMS

- **Buy Nothing Bloomfield Facebook Group.** Open to Bloomfield residents only. Share with fellow residents what you don't need, and ask for what you do. Search "Buy Nothing Bloomfield" on Facebook to find it.
- **Take-It-Or-Leave-It at Windsor Transfer Station.** Drop off what you don't want, take what you do.
- **Clothing & Household Items:** Usable items can be taken to Goodwill (331 Cottage Grove Road). Call (860) 969-5514 to learn more.
- **Books, DVDs, AudioBooks:**
 - Can be donated to local libraries for book sales.
 - Books only: There are also a number of Little Free Libraries in town (Town Hall, Boundless Playground, Laurel & Metacomet Schools, Old St. Andrew's Greenway Parking Lot) where books can be given and taken.
- **Building Materials, Appliances, & Furniture:**
 - Habitat for Humanity ReStore (500 Cottage Grove Road) is a home improvement and donation center. Learn more at hfhnc.org/restore or call (860) 519-0828.
 - Furniture & household goods only: Journey Home distributes donated goods to people transitioning from homelessness to independent living. Learn more at journeyhome.org/a-hand-up or call (860) 808-0336.


OTHER ITEMS

- **Batteries & Compact Fluorescent Lights (CFLs):** Accepted at Lowe's and Home Depot.
- **Plastic Plant Pots/Containers:** Accepted at Lowe's.
- **Plastic Bags & Film:** Bins for recycling plastic bags & film are available at Stop & Shop, Lowe's, and Target.
- **Styrofoam:** Some UPS stores will accept flat, solid pieces of styrofoam for mailing use.
- **Green Waste:** Green Earth Recycling (61 East Dudley Town Rd) accepts logs, branches, brush, leaves, grass. Call (860) 242-2325 to learn more.

SAFE DISPOSAL

- **Prescription Drugs:** Pick up a Detera Drug Deactivation bag from the West Hartford-Bloomfield Health District at 580 Cottage Grove Road, Suite 100, Bloomfield, or call (860) 561-7900 for more information. Additional resources available at shorturl.at/ZVgcz.
- **Hazardous Waste:** MDC collects hazardous wastes annually. For dates and information visit themdc.com/environment-health-safety/household-hazardous-waste-collection. Chemicals, gasoline, and batteries are some of the items accepted.
- **Fire Extinguishers:** Call the Fire Department at (860) 242-1779 or (860) 243-8949 to learn more.

Not sure where something should go?
Look it up on RecycleCT.com





GREEN LIFE

THIS BEAUTY IS A BEAST - D.E.E.P. ADVISES: KILL IT WHEN YOU SEE IT!

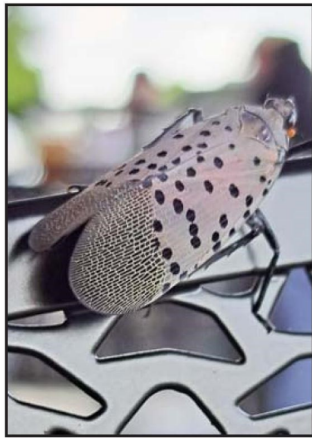


By Paula Jones

Chair, Bloomfield Conservation Energy & Environment Committee

Last Friday this pretty insect stopped at Back East Brewery during Customer Appreciation Day. Unfortunately looks are deceiving. Although it's a very attractive bug, the Spotted Lanternfly (SLF) "is a new plant pest to the United States and poses a threat to Connecticut's environment, residential areas, and agricultural interests, particularly forests, orchards, vineyards, and nurseries" (Source: Connecticut Department of Energy and Environmental Protection (DEEP))

Despite its name, the SLF is not a fly but a large (one to one-and-a-half inch long) plant hopper native to China, India, and Vietnam. It likely arrived in North America hitching a ride on imported goods. The insect can walk, jump, or (as an adult) fly short distances. The SLF feeds by sucking sap from the stems and leaves of host plants which can weaken and damage the plant by reducing photosynthesis. Its preferred host is the Tree of Heaven (*Ailanthus altissima*) an invasive plant that



is native to China. The Traprock Ridge Land Conservancy (TRLIC) found SLF on Tree of Heaven trees at one

of its Bloomfield properties. TRLIC has reported the sighting and is taking steps to remove these invasive trees which are attracting the SLF.

The SLF's ultimate impact on Connecticut's trees isn't yet known, but almost half of Connecticut's forest tree species and many fruit trees are considered potentially susceptible. Additionally, in large numbers these insects make a mess - their feeding produces a sticky,

PROTECT YOURSELF AGAINST MOSQUITO BITES

As summer fades into fall, we can look forward to crisp fall days without mosquitos! Until the first hard frost, however, remember some simple steps you can take to protect yourself against mosquito bites:

- Minimize activities outdoors at dawn or dusk when mosquitoes are most active;
- Wear long-sleeved shirts and pants;
- Use insect repellent (look for the following active ingredients: DEET, picaridin,



IR3535, oil of lemon eucalyptus, para-menthol-diyl, or 2-undecanone);

- Repair holes in screens, dump containers with standing water.

For more information:
www.cdc.gov/mosquitoes

sugary residue called "honeydew" which creates another set of issues.

What to do if you find SLF? The DEEP advises the following:

- (1) Take a photo of it and report the sighting; a link to more information and a simple online form can be found here:



or visit

<https://portal.ct.gov/deep/forestry/forest-protection/spotted-lanternfly#What1>

- (2) Kill it. After I photographed this SLF, it flew the short distance to the neighboring table. I had some explaining to do after my husband walked over to that table and not-so-discreetly smashed it. Happily, everyone was a good sport about it.

So be aware that if you see this beauty you can help the environment by photographing it, killing it immediately to slow down its spread, and then reporting your sighting.